



INTERNOVI
TRANSPORTSYSTEMEN

Upwards with Internovi!

Vertical conveyors are an excellent solution when product is to be transported to a higher level on a relatively small floor space. Internovi is specialized in engineering, control, delivery and installation of vertical conveyor systems.

Internovi supplies custom made systems. On the basis of your demands and specifications we look for an optimal solution. Point of departure is always a most favourable price/performance relation.

Typical for Internovi's advanced systems is their noiseless running, which is achieved by means of the rubber block chain.

A key feature of the Internovi approach is the aspiration to achieve highest possible reliability of the delivered installations. Continuity in your conveying system is essential for a successful operation. An accurately working service department just adds extra security.

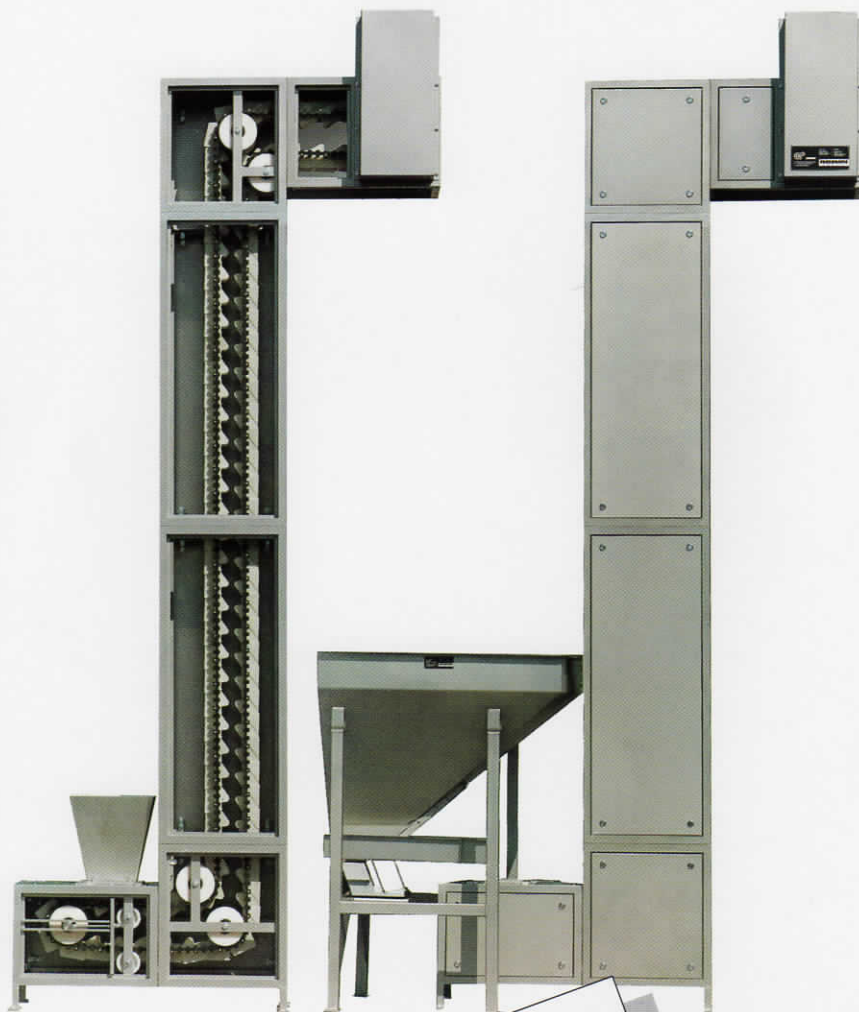
Internovi supplies transport systems for bulk materials. These systems are commonly used in the food industry, chemical industry, building industry and ceramic industry.

Continuous bucket elevators

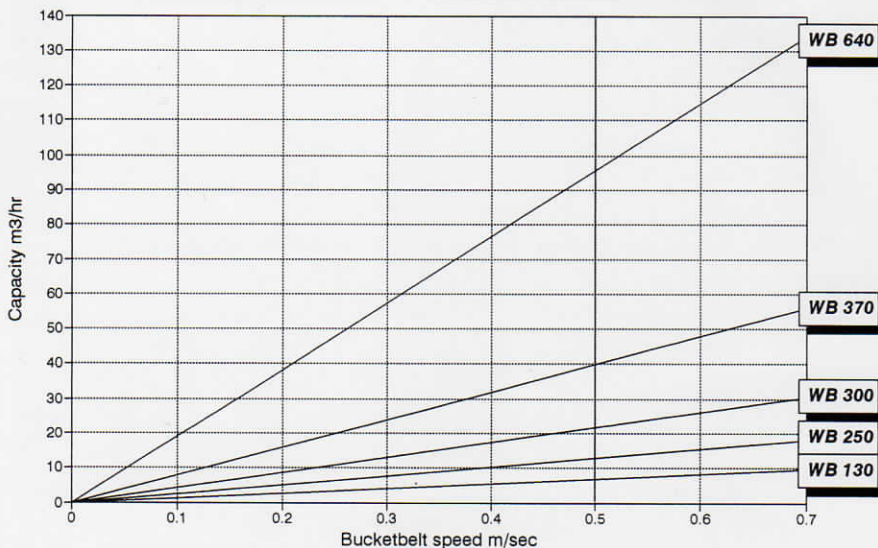
In Holland, Internovi is the only company supplying this unique soundless solution for horizontal-vertical-horizontal conveying. Bucket elevators are used for the gentle transport of bulk materials in throughputs till 200 m³/hour. The elevator consists of a closed bucket belt in which the buckets are fitted by means of flexible connectors, so that spillage is reduced to a minimum. The bucket elevator transports materials from **various** infeed points to **one central** discharge point. Noteworthy are the rubber block chains with invulcanised steel wires, which ensures a very quiet running (at most 65 dBA).

Standard design made from folded steel plate. The inner shaft has been smoothed in order to prevent waste product deposit. The shafts are provided with access doors for inspection and maintenance. The entire inner work is non-corrosive!!!

Special design made from special profiles with removable panels over the entire shaft length and smoothed outer sides. This elevator is provided with an infeed dosing system consisting of a bunker with vibratory feeder.



Bucket Elevator Capacities

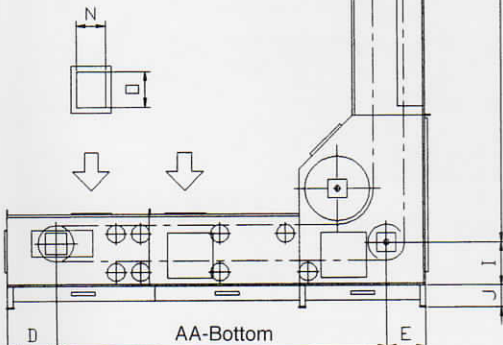
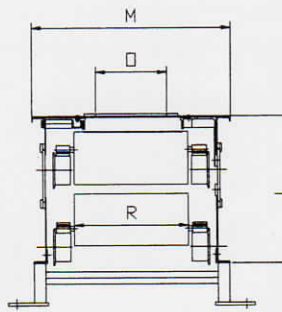
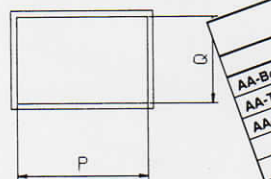
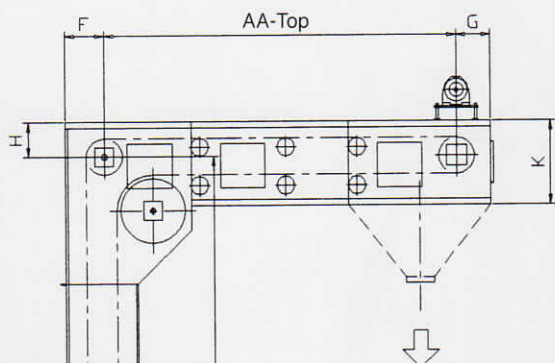
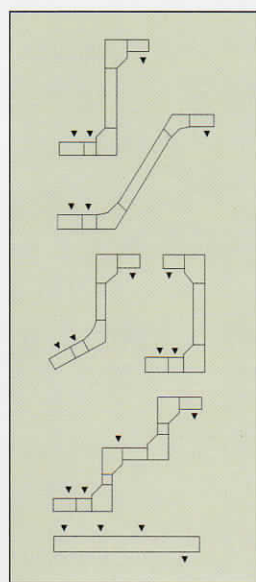


Other designs are available, for instance:

- totally open
- gasproof
- dustproof
- explosion-safe
- heat-resistant up to 220°C
- Stainless-steel AISI 304 (material nr. 1.4301)
- Acid-proof (casing from stainless-steel AISI 316 material nr. 1.4401)

Some specific advantages of these elevators compared with conventional systems

- Explosion-safe and low noise-level (65 dBA)
- Nearly maintenance free
- Long service life
- Solid construction
- The entire innerwork, such as the belt and the wheels, are made of non-corroding materials. The bucket belt consists of rubber chains in combination with connected PA buckets.
- Because of the rubber block chain (invulcanised steel wires), the elongation of the chain is almost nil.
- Gentle conveying of breakable goods
- Spillage is reduced to a minimum:
 - a) Because the buckets are interconnected by means of flexible connectors.
 - b) The wide buckets ensure a wide filling point
- No guidings in the horizontal and vertical sections, where waste product might stay behind
- Low energy consumption



Dimensions					
	WB 130	WB 250	WB 300	WB 370	WB 640
AA-Bottom min.	600	825	1220	1410	2000
AA-Top min.	730	870	1230	1400	1600
AA-Vertical min.	245	245	230	290	500
D	155	155	230	290	400
E	155	175	240	310	400
F	175	165	265	310	400
G	165	245	100	600	750
H	245	100	500	600	1032.5
I	100	500	500	660	500
J	410	410	590	250	500
K	410	470	200	250	1165
L	350	200	200	956	925
M	200	150	856	574	640
N	80	770	504	370	750
O	670	404	300	550	
P	284	250	410		
Q	130	260			
R	260				
S					



Multi-discharge bucket elevators have the same capacities and are used in the same areas of application as bucket elevators. This type of bucket elevator can be loaded **at various** infeed points but, unlike the bucket elevator, the buckets can be discharged separately **at various** discharge points. At the discharge points, the buckets are individually pneumatically turned over.

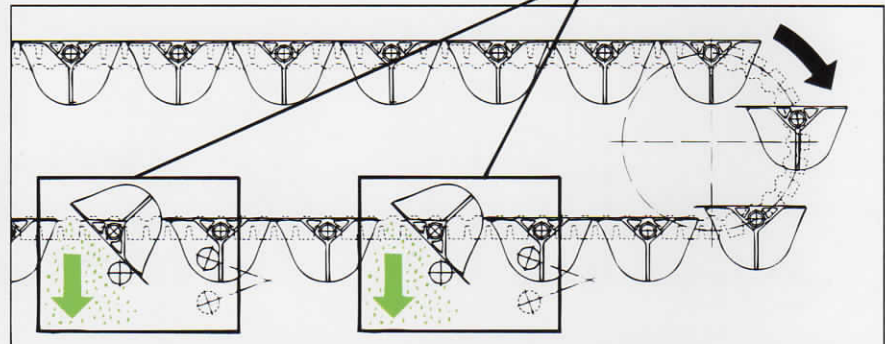
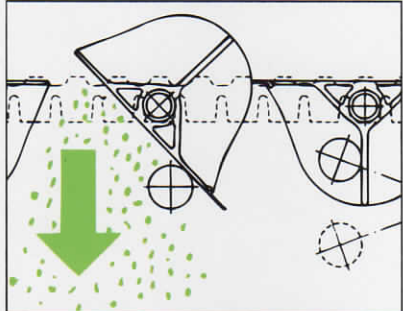
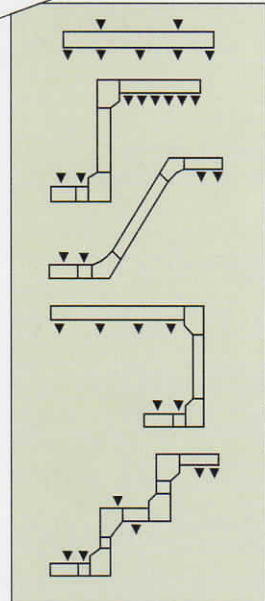
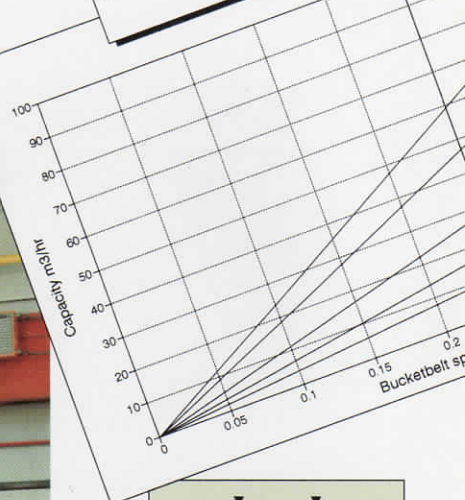
An additional application possibility of these elevators is their use as dosing unit.

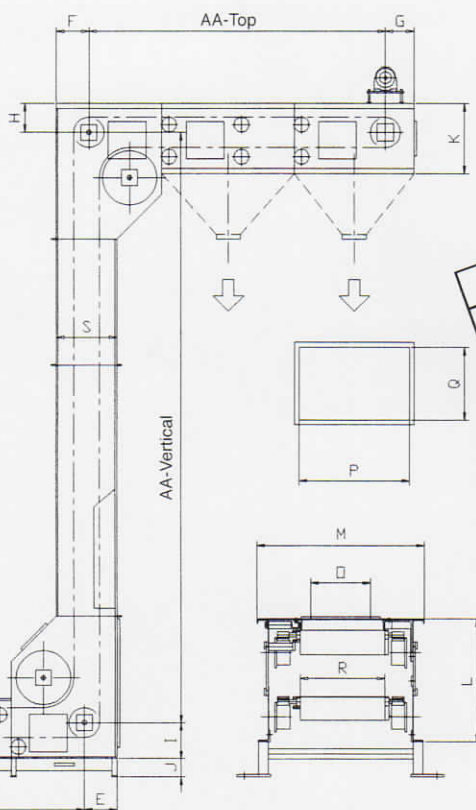
Contrary to the bucket elevators, the buckets are not interconnected so that they can turn over individually.

A bucket elevator for loading 8 bunkers in standard housing construction.



Multi-Discharge Bucket Elevator Capacities





Dimensions					
	PB 200	PB 350	PB 500	PB 600	PB 700
AA-Bottom min.	1250	1360	1400	1850	1750
AA-Top min.	1360	1760	1410	1710	2250
AA-Vertical min.	1760	350	1440	1440	1900
D	350	270	500	500	800
E	270	270	400	400	600
F	270	240	400	400	600
G	240	200	310	310	430
H	200	300	450	450	570
I	300	100	200	200	200
J	100	500	760	760	1000
K	500	500	760	1030	1110
L	500	690	930	500	500
M	540	200	500	500	1000
N	200	200	400	900	1000
O	100	920	826	926	700
P	920	604	500	600	1000
Q	454	350	600	750	1000
R	200	500			
S	500				



Depending on the available surface area, various incline conveyors can be used to ensure trouble-free vertical transport.

◀ This conveyor which is provided with a large hopper is manufactured for vertical transport of piece goods, like for instance plastic bottles.

▲ The height of this conveyors is manually adjustable by approx. 500 mm, depending on the different final packagings. Thus, the falling height of the product is limited, so that the risk of damaging the product is reduced to a minimum.

Sidewall beltconveyor.

These conveyors are mostly used for vertical transport of bulk goods in throughputs of 0 - 200 m³/hour.



Continuous elevators are used to transport a wide range of piece goods from for instance one floor to the other. They are used in conveying systems whereby goods have to be conveyed to a higher level. Capacities amount to approx. 3.000 pc/h at a belt speed of up to 0,7 m/sec.

Standard construction made of prefabricated aluminium elements with access doors in the lower part for inspection and maintenance. These elevators are available in 2 types: 'S' and 'C' construction. The difference between these two types is, that the 'S' elevators are loaded on one side and discharge on the other side, whereas the 'C' elevator loads and unloads on the same side.

Other constructions available:

- Painted steel elements
- Galvanized iron elements
- Stainless-steel constructions.

Special stainless-steel construction

made of stainless-steel elements for application in meat-processing industry to transport piled crates with a height of 1.700 mm and a weight of 170 kg over a vertical distance of 8.000 mm.

The platforms are chosen on the basis of the product to be elevated. In combination with rubber block chains, synthetic wheels and stainless-steel shafts they form a non-corrosive innerwork of the elevator and guarantee a noiseless and maintenance-free conveying medium.

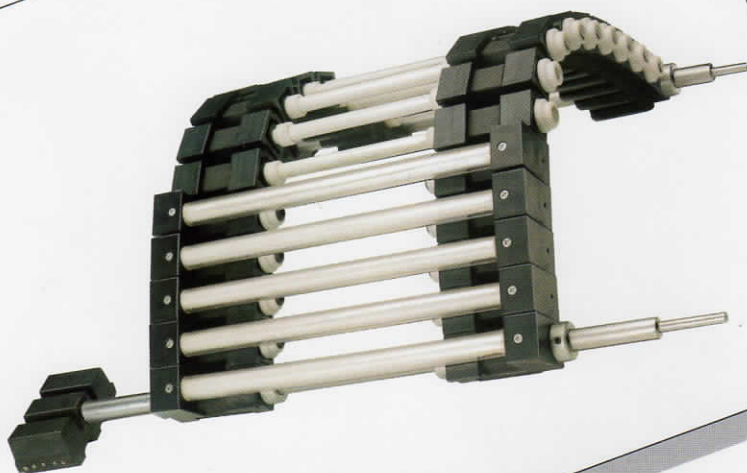
Some specific advantages of these elevators:

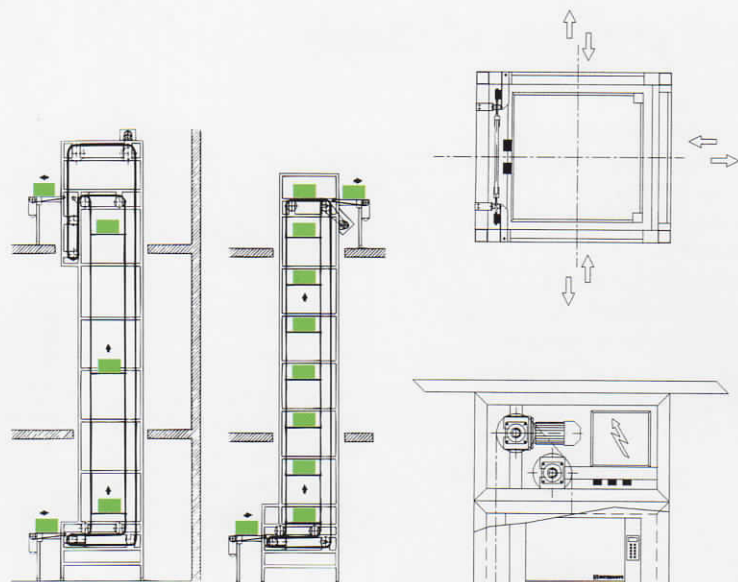
- Explosion-safe and noiseless (< 65 dBa).
- Because of the rubber chain (with invulcanised steel cable) the elongation of the chain is almost nil.
- No sagging of the platforms because of special construction.
- High capacities of up to 3.000 pieces/hour.
- Nearly maintenance free
- Long service life
- Entire innerwork, like rubber block chains, wheels and platforms, made of non-corrosive materials.
- Solid construction.

Applications of our piece-good elevators

All kinds of piece goods in a wide range of industries, either packed or not in/on:

- Crates
- Containers
- Boxes
- Trolleys
- Sacks
- Pallets
- Trays
- Etc. etc.





Discontinuous small goods elevators

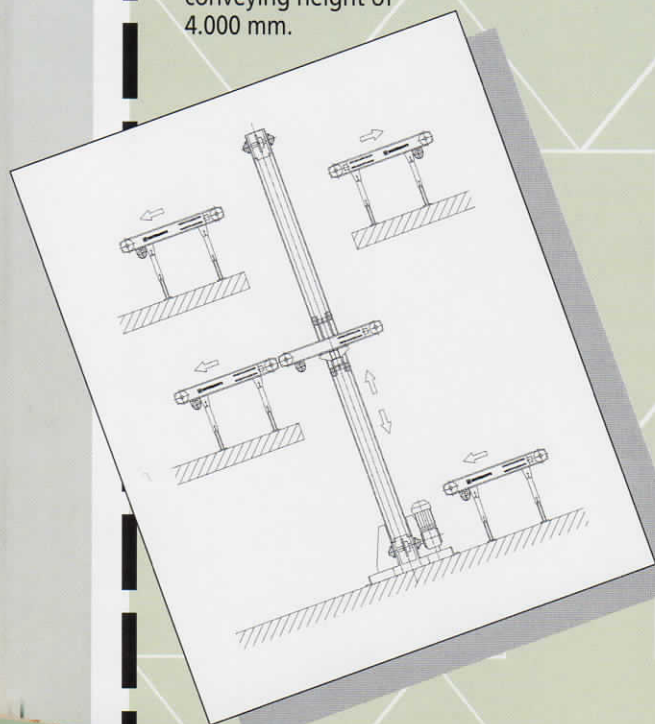
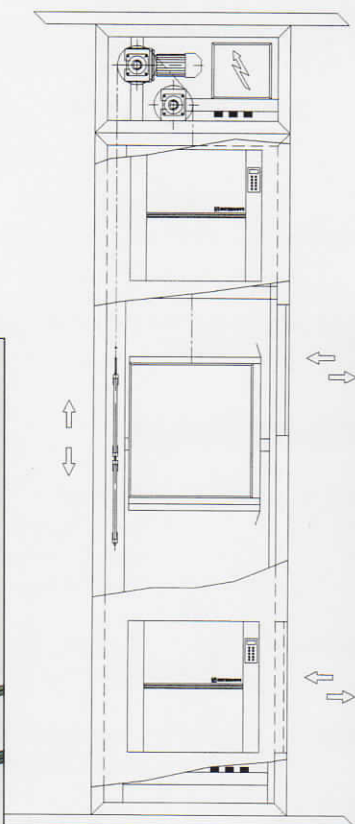
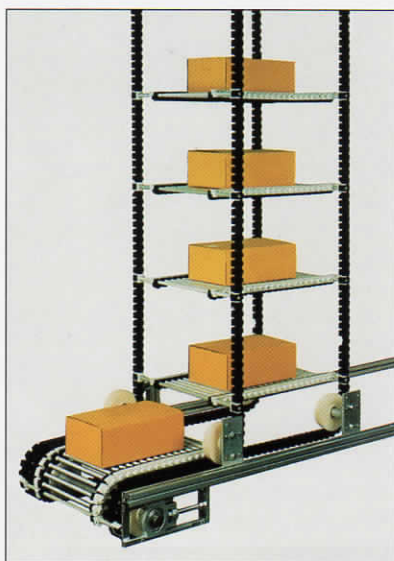
This type of elevator is used to convey small goods like; books postpackages, food etc. for example between different floors. There are no capacity demands. The elevator consist of a casing structure in which a box is moved by means of steel cables.

Areas of application:

- Hotel and catering industry
- Hospitals
- Public offices
- Shops
- Warehouses
- Mail distribution

Discontinuous elevators

This type of elevator is used in conveying systems covering different loading and discharge levels but with a desired capacity limited to approx. 150 pieces/hour at a conveying height of 4.000 mm.



Internovi program of supply

- Bucket elevators
- Multi-discharge bucket elevators
- Vertical continuous elevators in 'S' and 'C' design
- Discontinuous elevators
- Discontinuous parcel elevators
- Incline conveyors
- Specially designed conveyors
- Control systems for turn-key projects
- Loading and unloading conveyors
- Infeed dosing systems for elevators
 - Vibrating troughs
 - Bunkers/silos
 - Slide/dosing valves
 - Tube conveyors
 - Cellular sluices
 - Chain conveyors
- Discharge systems for elevators
 - Distributer valves
 - Turnhead distributors
- Support constructions and maintenance platforms in steel and stainless-steel.

Application Areas

- Food processing industry
 - Chocolates - Cornflakes - Peanuts - Nuts - Cacao
 - Peas - Pickles - Beans - Salt - Sugar - Candy
 - Muesli - Milkpowder - Maize - Vegetables
 - French Fries - Etc.
- Building materials
 - Gypsum - Lime - Sand - Cement - Dry mortar
 - Burnt clay - Dry chalk - Etc.
- Ceramic industry
 - Glass beads - Basic materials for the production of porcelain - Marble sand - Glass fragments - Etc.
- Chemical industry
 - Chemically neutral till aggressive materials.
 - Washing-powder - Sodium carbonate
 - Sulphur tablets - Amonium nitrate - Phosphates
 - Soap flakes - Tablets - A-cokes - Perlite - Salts
 - Silicates - Etc.
- Other materials
 - Aluminium grains - Animal feed - Waste material
 - Filtering dust - Plastic bottles - PET preforms



Hanzestraat 12b, 7622 AX Borne (O)
P.O. Box 187, 7620 AD Borne (O) Holland
Phone (31) 74 - 2666006
Fax (31) 74 - 2662305



Hanzestraat 12b, 7622 AX Borne (O)
P.O. Box 187, 7620 AD Borne (O) Holland
Phone (31) 74 - 2667199
Fax (31) 74 - 2662305